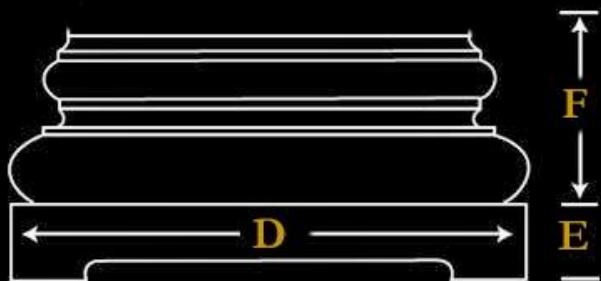
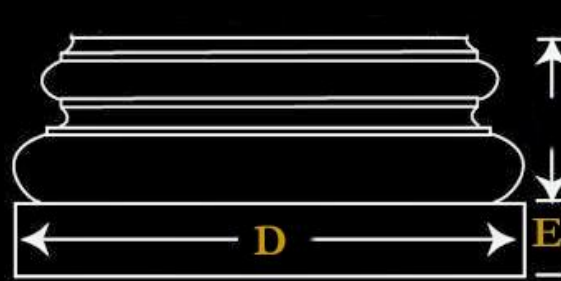


CHADSWORTH INCORPORATED

GREEK ANGULAR IONIC ARCHITECTURAL WOOD COLUMN (IN INCHES)								
SIZE	COLUMN SHAFT		CAPITAL			BASE		
	BOTTOM	TOP	A	B	C	D	E	F
6	-	-	2-3/4	4-1/2	7-1/2	8-1/2	1-1/2	2-7/8
8	8	6-1/2	3-3/4	6-1/2	9-1/2	10-3/4	1-7/8	3-1/4
10	10	8-1/2	5-1/8	8-1/2	14-1/4	13-3/8	2-3/8	3-7/8
12	12	10	6	10-1/2	17-1/4	16-1/8	2-3/4	4-1/2
14	14	12	7-1/4	12-1/2	20-3/4	18-3/4	3-3/8	5-3/8
16	16	13-1/2	8-3/8	14-1/2	20-1/2	21-1/2	3-7/8	6-1/4
18	18	15	9-3/4	16	24-1/4	24-1/4	4-1/4	7-1/8
20	20	17	11	18	29-3/4	27	4-3/4	8-1/8
22	22	18-1/2	11	18	29-3/4	29-3/4	5-1/4	9
24	24	20	12-3/4	20-5/8	35	32-1/2	5-3/4	9-15/16
26	26	22	-	-	-	35	6-1/4	10-5/8
28	28	23-1/2	-	-	-	38	6-3/4	11-3/8
30	30	25	-	-	-	40-1/2	7-1/4	12
32	32	27	-	-	-	43-3/8	7-3/4	13-1/8
34	34	28-1/2	-	-	-	46	8-1/4	14
36	36	30	-	-	-	48-3/4	8-3/4	14-3/4



Exterior



Interior

