

CHADSWORTH COLUMNS

FIBERGLASS BASES – INSTALLATION

STEP 1



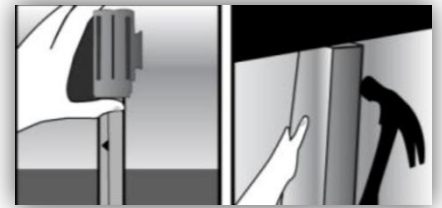
Before installing the decorative capital, cut the column at the top of the shaft just above the astragal (neck bead) within 1/8" from the astragal & belt sand flush to finish. (Skip this step if the columns were ordered "cut at bead" from the factory)

STEP 2



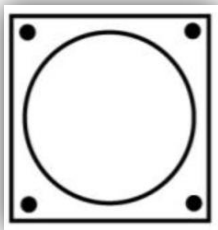
Measure the opening where the column will be installed. When calculating the overall height required, be sure to include the height of the capital. Trim the column shaft from the bottom to fit the height of the opening. (Column may be trimmed with a circular saw that has an abrasive blade.)

STEP 3



Raise the soffit slightly and install a brace so that the opening is slightly increased for easy installation of column.

STEP 4



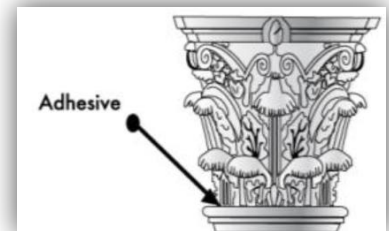
Pre-drill and countersink four holes in the base for screws.

STEP 5



Slide base onto the column from the bottom. Slide up about 1 foot and hold in place with shim or tape.

STEP 6



Apply FRP adhesive to the top of the column and the bottom of the capital.

FIBERGLASS BASES – INSTALLATION

STEP 7 & 8



Center the capital on top of the column. Remove any excess adhesive.

Countersink (3) screw holes below the neck ring up through the base of the capital.

STEP 9

Slide assembled column with attached capital into proper position under the soffit. Remove brace and lower load onto the column. Pre-drill and countersink holes through the capital at an angle into the soffit. Secure the capital to the soffit with rust resistant screws.

STEP 10



Anchor column using appropriate hardware satisfying all local and regional building codes.

STEP 11

Slide base down the column and align with capital.

STEP 12



Install screws in base. Use auto body filler, epoxy, or putty to cover the screw heads in the capital and base.

STEP 13



Use high quality caulk to fill gaps where the cap and base meet the column.

Finishing Instructions: Prepare the column, capital, & base for painting by sanding with 100 grit sandpaper or a sanding sponge. Follow the paint manufacturer's instructions for proper surface preparation. Paint with a high quality latex or oil base primer and paint.

www.COLUMNS.com

CHADSWORTH INCORPORATED

277 NORTH FRONT STREET ▪ HISTORIC WILMINGTON, NC 28401 ▪ PHONE: 1.800.486.2118 ▪ FACSIMILE: 1.910.763.3191 ▪ E-MAIL: sales@columns.com