



# CHADSWORTH COLUMNS



POLYSTONE® COLUMNS – FINISHING TIPS

## *PAINING AND FINISHING*

1. Make sure all surfaces are clean prior to painting. Use mineral spirits if oil or alkyd products are used. Warm soapy water should be used if latex products are utilized. Columns should not be sprayed or pressure washed prior to installation.
2. It is necessary to sand the column and caps and bases prior to priming and painting. Some surface filling may be required. Note: the surface on polyurethane caps and base/plinths must be thoroughly scuff sanded with 120 grit sandpaper and wiped clean prior to priming and painting.
3. Alkyd or oil based primer and paint are recommended. Latex products can be used, but additional sanding is required.
4. Paint should always be applied with a brush – *spray painting is not recommended.*
5. To preserve and protect the column from ultraviolet rays, use a good, high-quality exterior paint. At least one coat of primer and two coats of a final paint should be applied prior to installation.
6. Follow paint manufacturer's instructions concerning use within temperature ranges for best results.
7. **Do not use paint or solvents containing acetone.**

### FINISHING TIPS

In order to mimic the flow of the column shaft to the base moulding via a cove moulding, a filling technique must be used between the base and the shaft for a completed appearance. Using a plastic putty knife (which is more flexible) and a polyester type filler, perform a “feathering” application with the filler, turning it outwards to connect the shaft and the top of the base. See diagram below.

# FINISHING YOUR COLUMN

Use automotive body filler to cover all screw heads and any minor scratches, dents, or nicks that may have occurred during installation.

Apply a paintable silicone caulking between the small gap between the capital and the shaft and the base and the shaft. (**Note:** Not all silicone caulking is paintable.) If the gap is too large for caulk, you may need to first use a backer rod to give the caulk a surface to be applied to. [FIGURE 1]

If a more completed appearance is preferred, you can mimic the flow of the column shaft to the base moulding via a cove moulding or “conge” with a filling technique. Using a putty knife (which is more flexible) and a polyester type filler, such as Bondo, perform a “feathering” application with the filler, turning it outwards to connect the shaft and the top of the base. See diagram. [FIGURE 2]

Lightly sand and prime in needed areas.

Apply one or more final paint coats for a finished column.

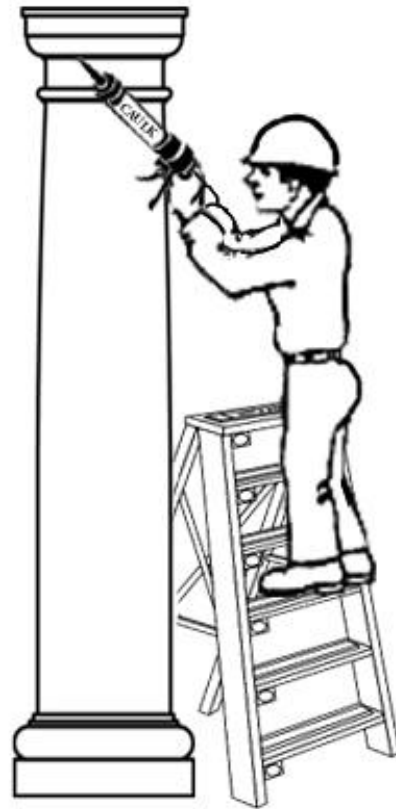


FIGURE 1

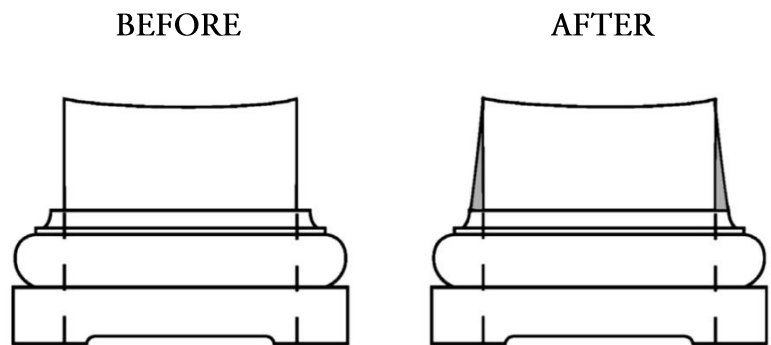


FIGURE 2